

# Foy's EPICS Events

Extrusion Production Information and Control Systems

September 2008 \* Volume 12, Issue 3

## IN THIS ISSUE

IN THIS ISSUE .....	1
FLORIDA CONFERENCE IS ONLY 7 MONTHS AWAY .....	2
EPICS V8.10 TO BE RELEASED NEXT WEEK .....	3
TRAINING CLASS AVAILABLE IN OCTOBER.....	3
JIM FOY DESCRIBES EPICS “PERCENT RECYCLED CONTENT” FEATURE TO AEC .....	3
HOWARD CANTRELL JOINS FOY INC.....	4
MORE INVOICE NOTES NOW AVAILABLE.....	4
SCRAP INFO ADDED TO DEPARTMENT TAB ON SOITEM SCREEN .....	5
CREATING SHIPPING PICKLIST NOW FASTER.....	6
OTHER IMPROVEMENTS INCLUDED IN THE EPICS V8.10 UPDATE .....	6
OLD INVOICING SCREEN TO GO AWAY .....	7
TIFTON JOINS THE EPICS FAMILY .....	7
POSTLE ALUMINUM INSTALLS EPICS AT SECOND PLANT .....	7
EPICS CUSTOMER LIST.....	8

## FLORIDA CONFERENCE IS ONLY 7 MONTHS AWAY



The 11<sup>th</sup> annual EPICS User Conference will be held at the Hilton Sandestin Beach Golf Resort and Spa, in Destin, Florida. The schedule will be the same as last year (dates are firm, but times may change):

Sunday, April 19	4 PM – 8 PM	Registration Reception
Monday, April 20	8 AM – 2PM Evening	Conference Sessions Group Activity (maybe a Cookout on the beach)
Tuesday, April 21	8 AM – 2 PM	Conference Sessions
Wednesday, April 22	8 AM – 2 PM	Optional Training Sessions

As you can tell from the photo, the hotel is located on a beautiful white sand beach. After browsing their web site at <http://www.sandestinbeachhilton.com/>, I'm sure you will want to mark April 19-22, 2009 on your calendar and plan for another valuable and enjoyable EPICS User Conference.

Keep watching the [Foy Inc web site](#) for developing information on the conference.

**EPICS V8.10 TO BE RELEASED NEXT WEEK**



The latest EPICS update, Version 8.10, will be available early next week on the Foy Inc web site. Each EPICS System Administrator will receive email containing a link to the update, along with information on how to download and install it.

**TRAINING CLASS AVAILABLE IN OCTOBER**

You still have time to reserve a spot at the October 20-23 EPICS Training Class. This class will walk you through all of the major EPICS features, as well as several minor features you probably didn't even know existed.

You can find detailed description of this user training session on the [Foy Inc web site](#), under "Training".

**JIM FOY DESCRIBES EPICS "PERCENT RECYCLED CONTENT" FEATURE TO AEC**

<b>Worldwide Extrusions Packing Ticket</b>		
		
<b>10983</b>		
Part COVE MOULD		
Die 11052		
SO-Item 10758 - 2		
PO SF3422		
<u>Alloy</u>	<u>Temper</u>	<u>Finish</u>
6061	T5	Anodize Bronze
<u>Ship To</u>		
Ajax Pet Products 12999 ST. CHARLES ROCK RD San Francisco, CA 90210		
<u>Crew No.</u>	<u>Date Packed</u>	
1	02/15/2008	
<u>Pieces</u>	<u>Net Wt</u>	<u>Length</u>
10	270	24'0"
 Made with 90% Recycled Aluminum		

The program emphasis this year at the Aluminum Extruders Council Management Conference was on sustainability. Topics covering recycling, energy efficient product applications, and LEED certification dominated the program. Jim Foy gave a short presentation on how an extruder can print the percent recycled content on each bundle ticket. This demonstrates to customers in the building and construction industry that the extruder is serious about helping them gain LEED points.

Several billet suppliers at the conference stated that they routinely provide percent recycled content to their customers., including this number with the chemical composition data that they send to the extruder. EPICS allows an extruder to import the data and make it available to be printed on selected packing tickets.

If this information is not available, you can instead enter the average PerCent Recycled for each of your billet inventory records. This is a field added in EPICS V8.8 on the "Maintain Billets" screen. The EPICS V8.10 update enhances this field by updating it when billet receipts are posted. The field is updated the same way the price/lb field is updated – the new shipment is added to the inventory and a new average calculated.

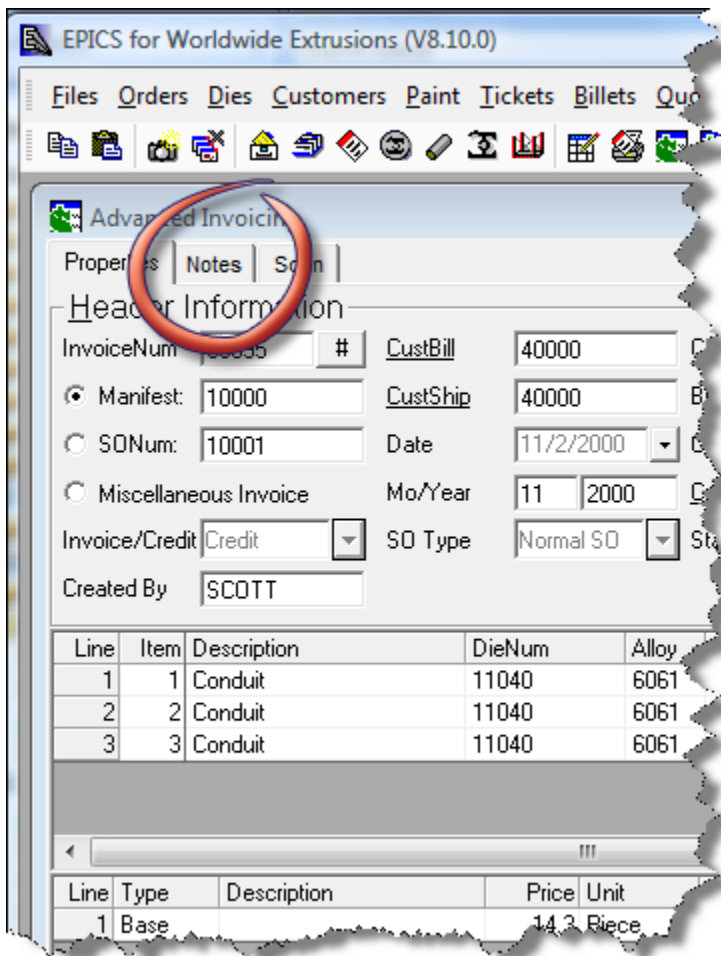
**HOWARD CANTRELL JOINS FOY INC**

We are pleased to welcome Howard Cantrell to Foy Inc. Howard comes to us with a strong programming background in VB.NET, and will be able to contribute greatly when we begin the process of converting EPICS from VB6 to VB.NET.

When Howard is not riding his motorcycle with the Faith Riders group, he is answering questions for other programmers as one of the top 15 Experts on the [Experts Exchange](#).

As Howard becomes more familiar with EPICS, he will join the rest of the Foy Inc group in handling our number one priority, customer support.

**MORE INVOICE NOTES NOW AVAILABLE**



The number one item on the 2008 WishList was to allow notes to be appended to each new invoice or credit memo prior to their being printed. This feature has been added in the EPICS v8.10 update that will be released next week.

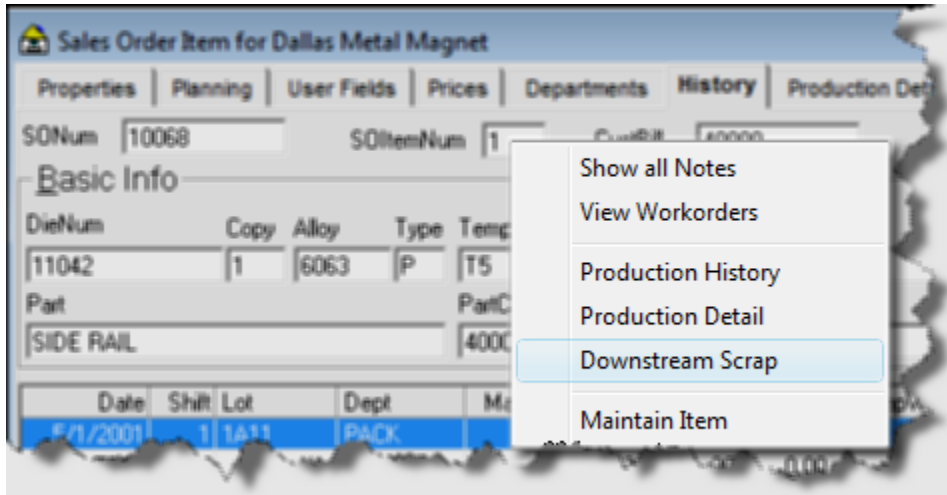
To use this new feature, you simply click on the new "Notes" tab on the Advanced Invoicing screen. From there, you can add a note to the invoice in the same way that you add notes to Sales Orders.

Standard Notes are available from this screen, so you can easily add repetitive notes to an invoice just by selecting the pertinent standard

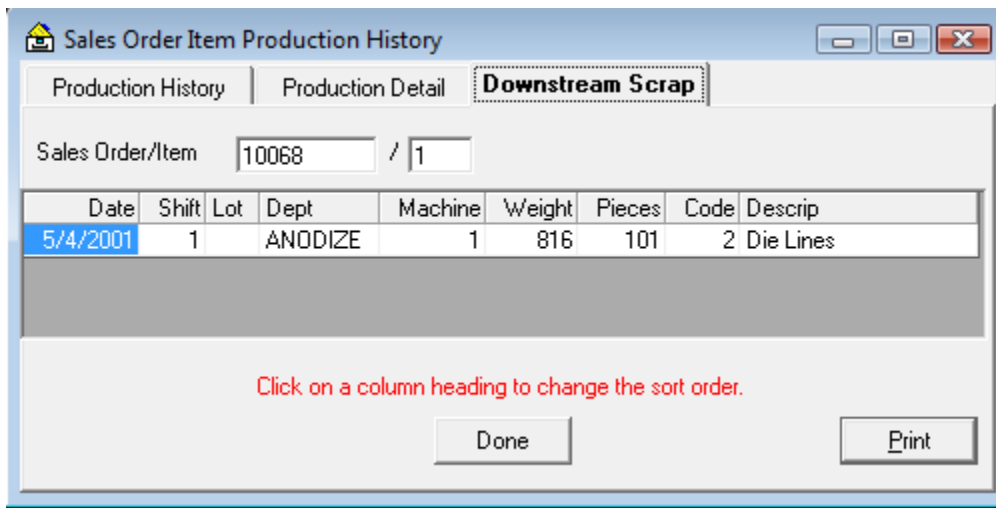
note.

**SCRAP INFO ADDED TO DEPARTMENT TAB ON SOITEM SCREEN**

The #2 item on the 2008 Wishlist was the ability to show scrapped details for a sales order item. This feature has been implemented by adding a “downstream scrap” item to the right-click menu.

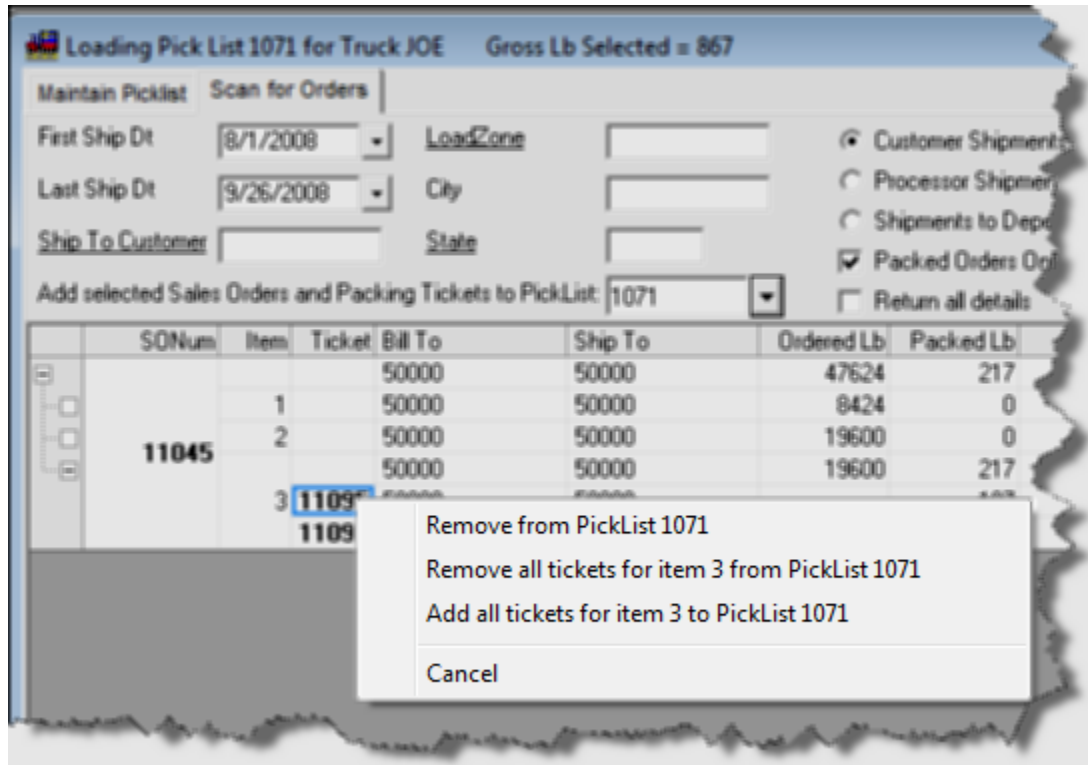


When this option is selected a new screen appears which lets the user examine downstream scrap as well as production history and production detail.



## CREATING SHIPPING PICKLIST NOW FASTER

The #5 item on the 2008 Wishlist was to develop a faster method of adding all tickets for an SOItem to a picklist. To accomplish this task, you simply right-click on a ticket and select the new option to add all tickets for the SOItem to the picklist.



You can also remove all tickets for an SOItem from the picklist using the same right-click menu.

## OTHER IMPROVEMENTS INCLUDED IN THE EPICS V8.10 UPDATE

- \*Added "Good Pc" column to "Shift Summary" tab of **Advanced Data Collection** screen.
- Allowed tickets to be printed or reprinted from **Maintain Stock Inventory** screen.
- Added error checking to the **Routing creation** procedure to catch basic errors, such as PAINT before EXTRUDE, PACK before AGE, etc.
- Start Time, StopTime, Hr, and Crewsize can now be changed from the **Maintain Tickets** screen for packed tickets.

- In the **Pricing** Module, Cavity charges are applied only if the routing includes a department with a THERMAL FILL category. (This can be over-ridden by setting the new configuration value "gCavityRequiresThermal" to NO. )
- **Stock Inventory replacement orders** were not being displayed between the time they were extruded and the time they were placed into inventory. This has been corrected.
- **Crystal** XI Release 2 and Crystal 2008 viewers are now supported. You can download these viewers from [www.foyinc.com](http://www.foyinc.com).
- A new {@Proof} formula has been added to the standard EPICS Acknowledgement and Manifest so that the word **PROOF** can be printed if desired.
- A new configuration setting, *gMaintenanceLockout*, allows the EPICS System Administrator to temporarily ban EPICS logins, and to display an explanatory message.

### **OLD INVOICING SCREEN TO GO AWAY**

As enhancements continue to be made to the Advanced Invoicing screen, this is a good time to remind you that the old Invoicing screen will be eliminated in the not-too-distant future. If you are still using this screen, we encourage you to move to the new screen as soon as possible.

### **TIFTON JOINS THE EPICS FAMILY**

We welcome the folks at Tifton Extrusions as the latest EPICS users. Tifton was formerly an Alcoa-owned facility, but they have been purchased by the same group that owns BRT Extrusions. BRT has used EPICS since they started, so naturally they installed EPICS at the Tifton plant. The plant is located in Tifton Georgia.

### **POSTLE ALUMINUM INSTALLS EPICS AT SECOND PLANT**

Postle Aluminum recently installed a press at their facility in the Portland area of Oregon. They are using the Basic Edition of EPICS to help run this facility. Postle already had EPICS running at their plant in Michigan (the former DW Extrusion facility)

**EPICS CUSTOMER LIST**

**On any given day  
EPICS is helping over 13,000 people  
at over 85 extrusion plants around the world.**

Aacao Extrusions – Niles, Michigan  
 Aerolite Extrusion – Youngstown, Ohio  
 Alenco – Bryan, Texas  
 Almag Aluminum Inc. – Brampton, Ontario  
 Altec (Alumnitec) – Jeffersonville, Indiana  
 Aluminio de Baja California (ABC) – Tijuana, Mexico  
 Aluminio de Centro America (ALDECA) – San Salvador, El Salvador  
 Aluminio Del Caribe – San Juan, Puerto Rico  
 Aluminum Extrusions Inc – Senatobia, Miss.  
 American Aluminum Extrusions of Ohio – Canton, Ohio  
 American Aluminum Extrusions of Wisconsin – Beloit, WI  
 APEL Extrusions Ltd. – Calgary, Alberta  
 Arch Aluminum – Miami, Florida  
 Astro Shapes – Struthers, Ohio  
 Atlantic Aluminum (Signature) – Lumber Bridge, N.C.  
 Benada Aluminum – Medley, Florida  
 Bristol Aluminum – Levittown, Pennsylvania  
 Briteline Extrusions – Summerville, S. Carolina  
 BRT Extrusions – Niles, Ohio  
 CanArt – Brampton, Ontario  
 CanArt – Tecumseh, Ontario  
 Central Aluminum – Columbus, Ohio  
 Crane Aluminium Extrusions – Angaston, Australia  
 Crane Aluminium Extrusions (Capral) – Penrith, Australia  
 Crown Extrusions, Chaska, Minnesota  
 Crystal Extrusion Systems – Union, Missouri  
 Empire Resources – Baltimore, Maryland  
 Extrudex – Weston, Ontario  
 Extrudex – Bernières, Quebec  
 Extrudex – North Jackson, Ohio  
 FISA – Guayaquil, Ecuador  
 Frontier Aluminum – Corona, California  
 Golden Aluminum Extrusion – Plant City, Florida  
 Golden Aluminum Extrusion – Warren, Ohio  
 Hualum. – Pietermaritzburg, South Africa  
 Hualum. – Capetown, South Africa  
 Hualum. – Olifantsfontein, South Africa  
 Independent Extrusions (INEX) – Hamilton, New Zealand  
 Independent Extrusions (INEX) – Melbourne, Australia  
 International Extrusion – Alhambra, California  
 International Extrusion – Waxahachie, Texas  
 International Extrusions – Garden City, Michigan  
 Jalex – Kingston, Jamaica  
 Keymark Corporation – Fonda, New York  
 Keymark Corporation – Lakeland, Florida  
 MI Metals, Inc - Smyrna, Tennessee  
 MI Metals, Inc – Millersburg, Pennsylvania  
 MI Metals, Inc – Oldsmar, Florida  
 MI Metals, Inc – Millen, Georgia  
 MI Metals, Inc – Prescott Valley, Arizona  
 Mid-America Extrusions – Indianapolis, Indiana  
 Midwest Aluminum – Withee, Wisconsin  
 Non-Ferrous Extrusion – Houston, Texas  
 Patrick Metals – Mishawaka, Indiana  
 Pennex – Wellsville, Pennsylvania  
 Perfiles de Aluminio – San Juan, Puerto Rico  
 Postal Aluminum – Cassopolis, Michigan  
 Postal Aluminum – Portland, Oregon  
 Pries Enterprises – Independence, Iowa  
 PT Alumindo Perkasa – Jakarta, Indonesia  
 PT Indal – Surabaya, Indonesia  
 Profab Industries – Canfield, Ohio  
 Profile Extrusions – Rome, Georgia  
 Profile (RJS Precision Ext.) – Phoenix, Arizona  
 Selaco Aluminium – Johar, Malaysia  
 Service Center Metals – Prince George, Virginia  
 Sierra Aluminum – Fontana, California  
 Silver City Aluminum – Taunton, Mass  
 Sierra Aluminum – Riverside, California  
 Specialty Extrusion – Fullerton, California  
 Spectra Aluminum – Woodbridge, Ontario  
 Star Extruded Shapes, Canfield, Ohio  
 Superior Extrusion – Gwinn, Michigan  
 Sun Valley Extrusions – Los Angeles, California  
 Tecnoglass – Barranquilla, Columbia  
 Taber Extrusions – Gulfport, Mississippi  
 Taber Extrusions – Russellville, Arkansas  
 TAI-AO Aluminium – Taishan, Guang Dong, China  
 Temroc Metals (Signature) – Hamel, Minnesota  
 Tifton Extrusions – Tifton, Georgia  
 Tri-City Extrusion – Bristol, Tennessee  
 Tubelite – Reed City, Michigan  
 Vista Wall Arch. Products – Midway, Tennessee  
 Vista Wall Arch. Products – Terrell, Texas  
 Vitex – Franklin, New Hampshire  
 Wakefield Engineering – Pelham, New Hampshire  
 Western Extrusion – Carrolton, Texas  
 Zarbana Industries – Columbiana, Ohio

**Foy Inc**  
**111 Farmersville Parkway**  
**Farmersville, TX 75442**

**Phone: 972-782-7282**  
**Fax: 972-782-7130**

**Website: <http://www.foyinc.com>**

Jim Foy	<a href="mailto:jim@foyinc.com">jim@foyinc.com</a>
John Stenger	<a href="mailto:john@foyinc.com">john@foyinc.com</a>
Scott Wilson	<a href="mailto:scott@foyinc.com">scott@foyinc.com</a>
Howard Cantrell	<a href="mailto:howard@foyinc.com">howard@foyinc.com</a>
Stacy Coleman-Foley	<a href="mailto:stacy@foyinc.com">stacy@foyinc.com</a>
General mail	<a href="mailto:info@foyinc.com">info@foyinc.com</a>
Help	<a href="mailto:help@foyinc.com">help@foyinc.com</a>

To stop receiving EPICS-related email, send a blank email to [unsubscribe@foyinc.com](mailto:unsubscribe@foyinc.com)