

Foy's EPICS Events

Extrusion Production Information and Control System

October 2009 * Volume 13, Issue 3



IN THIS ISSUE

IN THIS ISSUE	1
2010 CONFERENCE : BACK TO BASICS	2
CONFERENCE TO INCLUDE TOUR OF COWBOY STADIUM	2
EPICS V8.13 DUE OUT THIS WEEK.....	2
EPICS V8.13 FEATURES 8 TOP WISHLIST ITEMS	3
NEW EPICS CUSTOMER IN AUSTRALIA	4
NEW "OPTI-CUT" FEATURE ADDED TO EPICS.....	5
EPICS CUSTOMER LIST.....	7

2010 CONFERENCE : BACK TO BASICS

The 2010 EPICS User Conference is scheduled for April 18-21, 2010, in Ft Worth, Texas. In recognition of the current economy, Foy has devised numerous cost-cutting features for this conference. It will be held at the [Embassy Suites hotel](#) in downtown Ft Worth, where we have been able to obtain better rates than at previous hotels. And the room rates include breakfast and an evening reception, which further reduces the conference fee. Attendees will not need to rent a car, since the hotel is adjacent to [Sundance Square](#) where numerous restaurants are located.

Information about conference topics and speakers will be in the December newsletter. But you can count on the normal high-value sessions that have been featured at past EPICS User Conferences.

CONFERENCE TO INCLUDE TOUR OF COWBOY STADIUM

A highlight of the upcoming EPICS User Conference will be a tour of the new \$1,250,000,000 [Cowboy stadium](#).



The stadium features over 700,000 pounds of extrusions in the massive end-zone door, as well as over 30 miles of aluminum louvers on the exterior. The giant screen hanging over the field stretches from one 20-yard line to the other, and weighs as much as a 747 aircraft.

The stadium tour will take place late Monday afternoon after the regular conference session is over.

EPICS V8.13 DUE OUT THIS WEEK

The latest EPICS update, Version 8.13, will be available later this week on the [Foy Inc web site](#). Each EPICS System Administrator will receive email containing a link to the update, along with information on how to download and install it.

As always, the update is available for all EPICS customers who have up-to-date Software Service Policies.

EPICS V8.13 FEATURES & TOP WISHLIST ITEMS

The latest EPICS update contains eight items from the 2009 Wishlist, including the top four items.

#1: A configuration setting now controls making changes to shipments that have been invoiced. This includes the voiding of tickets or manifests.

#2: The Maintain Stock Inventory screen now includes a Change Log tab to track manual changes to inventory items.

#3: You can now combine multiple invoices into a single PDF file when emailing invoices to a customer. And even though other documents were not mentioned in the wishlist request, we also provided the same capability for acknowledgements and manifests.

#4: On the Press Schedule screen, an item previously scheduled for one press can be moved to another press simply by selecting the item, then filling in the new fields "Add to Press__ for Date __ and Shift __" and clicking "Reschedule"

#15: A checkbox on the Print Invoices screen now allows you to bypass printing of invoices that have been emailed to the customer.

#16: Estimated Hours and Area are now shown on the Order Backlog screen

#21: Identical items with different cut lengths can be combined to a single workorder. (See the description of this "Opti-Cut" feature [below](#).)

#37: The Base Price elements that were used to build the Base Price for an item are now stored in a new table SOItemPriceDetail (which is not visible from EPICS, but is available for reporting only.)

Other new features that were not on the 2009 Wishlist are:

- The Print Workorder screen now allows the user to change Front Scrap, Rear Scrap, Max Runout, and Max Billet.
- The Right-click menu on SOItem now includes an item to jump directly to the Print Workorder screen. This will be especially valuable for press operators who need to recalculate a workorder.
- A configuration setting now allows warning order entry personnel if a Mill Finish item (FinCode 000) includes a finishing department or includes finishing pricing.

- A new configuration setting allows PackCode, ShipViaCode, and ShipTermsCode to be pulled by default from the ShipTo customer rather than the BillTo customer.
- When posting Cutback, the user can now input the lineals used.
- SysAdmins can add a button to the EPICS menu bar to launch another program.
- An "Original Ticket Number" field has been added to the Maintain Stock Inventory screen and the Pull Inventory Ticket screen, to make it easier to find stock tickets that are broken and pulled as partials.
- Numerous fixes are included in this update. They are noted in the "Help/ Revision History" screen in EPICS.

NEW EPICS CUSTOMER IN AUSTRALIA



One of the premier extruders in Australia is in the process of installing EPICS at their plants in Brisbane and Sidney. **G.James** will use the Multi-plant version of EPICS.

[The G.James Group of Companies](#) includes eight divisions, covering such diverse areas as glass, windows and doors, curtain wall, furniture, scaffolds, castings, and of course extrusions. They will use Oracle Manufacturing for most of their operations, but will use EPICS in their extrusion division.

The "high-rack storage" system pictured here demonstrates G. James' commitment to excellence. This system holds over 3000 racks of extruded metal. Ultimately, the computer

controlling this system will be linked to EPICS so that EPICS knows the bin location of each rack of in-process material.

NEW "OPTI-CUT" FEATURE ADDED TO EPICS

How would you extrude an order like this:

Die 43235

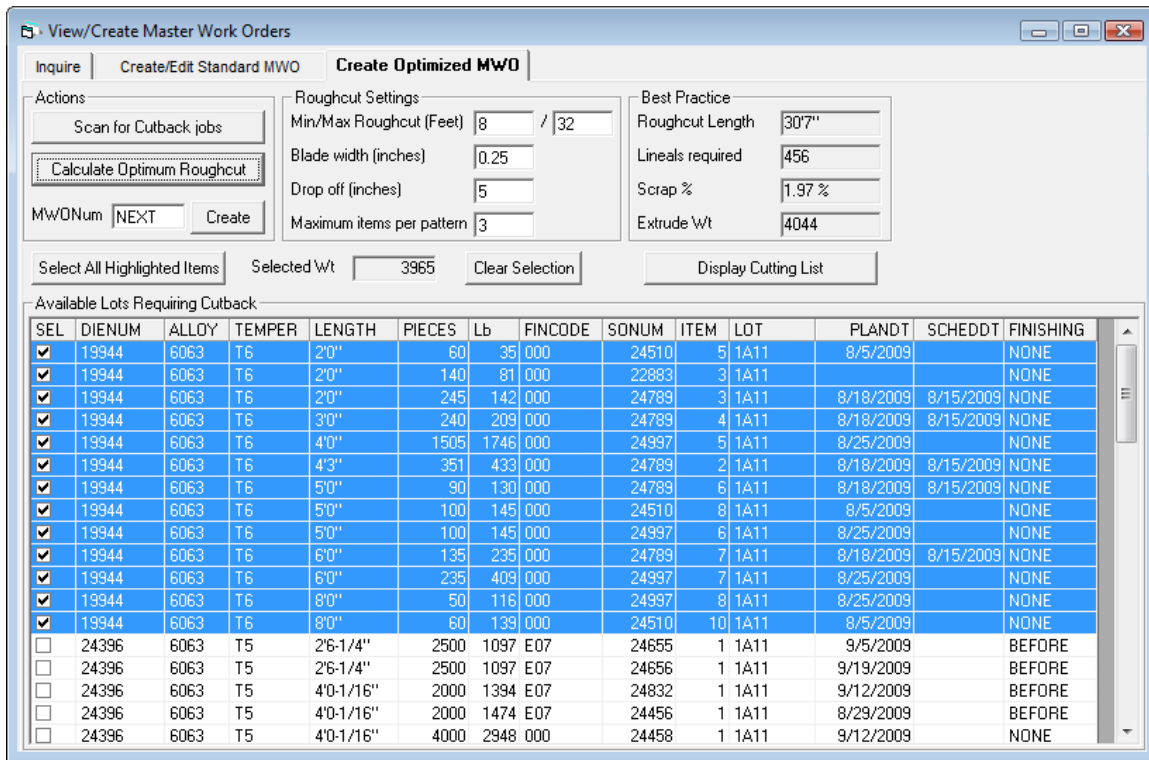
- 1) 56 pcs @ 3' 2-5/8"
- 2) 87 pcs @ 5' 6-3/4"
- 3) 3 pcs @ 6' 2-3/4"
- 4) 44 pcs @ 8' 5-9/16"
- 5) 23 pcs @ 12' 6-1/2"
- 6) 72 pcs @ 14' 2-1/8"

You could create 6 workorders, each with a different billet length. Or you could guess at a good stock length (24'?) and hope for the best.

OR

You can let EPICS calculate the optimum common extrude length, using the new Opti-Cut feature.

To use Opti-Cut, just select Items to include in an 'Opti-Cut' workorder



The resulting Opti-Cut workorder contains a press practice to extrude all items using one billet length. All items are combined into one run based on the optimum rough-cut length.

In addition, EPICS Generates an Optimum Cutting List for the off-line saw:

Pattern	Lineals	SDNum	Item	Lot	Cut Length	Pcs/Lineal	Pieces	Remainder	Scrap %
1	122							5.0"	1.91
		24789	3	1A11	2'0"	2	244		
		24997	5	1A11	4'0"	5	610		
		24997	7	1A11	6'0"	1	122		
2	71							5.25"	1.91
		24997	5	1A11	4'0"	2	142		
		24789	2	1A11	4'3"	4	284		
		24789	6	1A11	5'0"	1	71		
3	50							5.25"	1.91
		24510	5	1A11	2'0"	1	50		
		24997	5	1A11	4'0"	5	250		
		24997	8	1A11	8'0"	1	50		
4	46							5.0"	1.91
		22883	3	1A11	2'0"	3	138		
		24997	5	1A11	4'0"	4	184		
		24510	10	1A11	8'0"	1	46		
5	45							5.0"	1.91
		24789	4	1A11	3'0"	5	225		
		24997	6	1A11	5'0"	1	45		
		24510	8	1A11	5'0"	2	90		
6	36							5.5"	1.91
		24997	5	1A11	4'0"	3	108		
		24997	7	1A11	6'0"	3	108		
7	21							5.25"	1.91
		24997	5	1A11	4'0"	5	105		
		24997	6	1A11	5'0"	2	42		
8	16							5.5"	1.91
		24997	5	1A11	4'0"	3	48		
		24789	7	1A11	6'0"	3	48		
9	14							5.75"	1.91
		24997	7	1A11	4'0"	5	71		

EPICS CUSTOMER LIST

On any given day
EPICS is helping over 12,000 people
at over 80 extrusion plants around the world.

Aacoa Extrusions – Niles, Michigan
Aerolite Extrusion – Youngstown, Ohio
Alenco – Bryan, Texas
Almag Aluminum Inc. – Brampton, Ontario
Altec (Alumnitec). – Jeffersonville, Indiana
Aluminio de Baja California (ABC) – Tijuana, Mexico
Aluminio de Centro America (ALDECA) – San Salvador, El Salvador
Aluminio Del Caribe– San Juan, Puerto Rico
Aluminum Extrusions Inc – Senatobia, Miss.
American Aluminum Extrusions of Ohio – Canton, Ohio
American Aluminum Extrusions of Wisconsin – Beloit, WI
APEL Extrusions Ltd. – Calgary, Alberta
Arch Aluminum – Miami, Florida
Astro Shapes – Struthers, Ohio
Benada Aluminum – Medley, Florida
Bristol Aluminum – Levittown, Pennsylvania
Briteline Extrusions – Summerville, S. Carolina
BRT Extrusions – Niles, Ohio
CanArt – Brampton, Ontario
CanArt – Tecumseh, Ontario
Central Aluminum – Columbus, Ohio
Crane Aluminium Extrusions – Angaston, Australia
Crane Aluminium Extrusions (Capral) – Penrith, Australia
Crown Extrusions, Chaska, Minnesota
Crystal Extrusion Systems – Union, Missouri
Empire Resources – Baltimore, Maryland
Extrudex – Weston, Ontario
Extrudex – Bernières, Quebec
Extrudex – North Jackson, Ohio
FISA – Guayaquil, Ecuador
G. James – Brisbane, Australia
Frontier Aluminum – Corona, California
Hualum. – Pietermaritzburg, South Africa
Hualum. – Capetown, South Africa
Hualum. – Olifantsfontein, South Africa
Independent Extrusions (INEX) – Hamilton, New Zealand
Independent Extrusions (INEX) – Melbourne, Australia
International Extrusion – Alhambra, California
International Extrusion – Waxahachie, Texas
International Extrusions – Garden City, Michigan
Jalex – Kingston, Jamaica
Keymark Corporation – Fonda, New York
Keymark Corporation – Lakeland, Florida
MI Metals, Inc - Smyrna, Tennessee
MI Metals, Inc – Millersburg, Pennsylvania
MI Metals, Inc – Oldsmar, Florida
MI Metals, Inc – Prescott Valley, Arizona
Mid-America Extrusions – Indianapolis, Indiana
Midwest Aluminum – Withee, Wisconsin
Non-Ferrous Extrusion – Houston, Texas
Oldcastle (Vista Wall Arch. Products) – Midway, Tennessee
Oldcastle (Vista Wall Arch. Products) – Terrell, Texas
Patrick Metals – Mishawaka, Indiana
Pennex – Wellsville, Pennsylvania
Perfiles de Aluminio.– San Juan, Puerto Rico
Postal Aluminum – Cassopolis, Michigan
Postal Aluminum – Portland, Oregon
Pries Enterprises – Independence, Iowa
PT Alumindo Perkasa – Jakarta, Indonesia
PT Indal – Surabaya, Indonesia
Profab Industries – Canfield, Ohio
Profile Extrusions – Rome, Georgia
Profile (RJS Precision Ext.) – Phoenix, Arizona
Selaco Aluminium – Johar, Malaysia
Service Center Metals – Prince George, Virginia
Sierra Aluminum – Fontana, California
Silver City Aluminum -- Taunton, Mass
Sierra Aluminum – Riverside, California
Specialty Extrusion – Fullerton, California
Spectra Aluminum – Woodbridge, Ontario
Star Extruded Shapes, Canfield, Ohio
Superior Extrusion – Gwinn, Michigan
Sun Valley Extrusions – Los Angeles, California
Tecnoglass – Barranquilla, Columbia
Taber Extrusions – Gulfport, Mississippi
Taber Extrusions – Russellville, Arkansas
TAI-AO Aluminium – Taishan, Guang Dong, China
Tifton Extrusions – Tifton, Georgia
Tri-City Extrusion – Bristol, Tennessee
Tubelite – Reed City, Michigan
Vitex – Franklin, New Hampshire
Wakefield Engineering – Pelham, New Hampshire
Western Extrusion – Carrolton, Texas
Zarbana Industries – Columbiana, Ohio

Foy Inc
111 Farmersville Parkway, Suite 100
Farmersville, TX 75442

Phone: 972-782-7282
Fax: 972-782-7130

Website: <http://www.foyinc.com>

To stop receiving EPICS-related email, send a blank email to unsubscribe@foyinc.com

Jim Foy jim@foyinc.com
John Stenger john@foyinc.com
Scott Wilson scott@foyinc.com
Stacy Coleman- stacy@foyinc.com
Foley

General mail info@foyinc.com
Help help@foyinc.com