

# Foy's EPICS Events

Extrusion Production Information and Control System

May 2010 \* Volume 14, Issue 1



## IN THIS ISSUE

<b>IN THIS ISSUE .....</b>	<b>1</b>
<b>2010 CONFERENCE : ANOTHER GREAT SUCCESS .....</b>	<b>2</b>
<b>2011 CONFERENCE SET .....</b>	<b>2</b>
<b>GOOD TIMES AT FOY INC.....</b>	<b>2</b>
<b>NEW EPICS CUSTOMER IN IRELAND.....</b>	<b>3</b>
<b>EPICS V8.14 DUE OUT NEXT WEEK .....</b>	<b>3</b>
<b>DIE OVEN MODULE ADDED TO EPICS.....</b>	<b>3</b>
<b>“MUST FILL” FIELDS ADDED ON PRODUCTION POSTING SCREENS .....</b>	<b>4</b>
<b>USER FIELDS ADDED TO TICKET TABLE.....</b>	<b>5</b>
<b>EPICS V8.14 CONTAINS MANY MORE ENHANCEMENTS.....</b>	<b>6</b>
<b>EPICS CUSTOMER LIST.....</b>	<b>8</b>

**2010 CONFERENCE : ANOTHER GREAT SUCCESS**

The 2010 EPICS User Conference was another valuable event for both attendees and for Foy. Forty-five EPICS users from twenty-five companies and five countries attended two days of in-depth review of both new and old EPICS features. The optional training day was also well attended, with over one-half of conference attendees staying over for that session.

Photos of the 2010 conference can be viewed at <http://www.foyinc.com/Conference/2010/Files/PhotoAlbum.mht>

**2011 CONFERENCE SET**

The 2011 EPICS User Conference will be held on May 15-18, 2011, in Destin, Florida. We will be returning to the Hilton Sandestin Hotel. A new airport is opening next week in Panama City, Florida, which will make the trip to Destin more convenient.

Mark your calendar now for May 15-18, 2011. You will not want to miss this valuable educational and training event.

**GOOD TIMES AT FOY INC**

Each of us at Foy Inc has something to celebrate this spring. Jim and Stacy are celebrating new grand-children. Jim now has nine granddaughters but no grandsons, while Stacy's new grandson joins her one granddaughter. John and

Scott are celebrating high school graduation for each of their oldest children – John's daughter and Scott's son.

We have family photos we would be happy to share, but we need to keep this newsletter to less than 100 pages.

### **NEW EPICS CUSTOMER IN IRELAND**



[Architectural & Metal Systems](#) (AMS,) located in Cork, Ireland, is in the process of installing EPICS at their new extrusion facility.

AMS specializes in store front, curtain wall, and window and door systems. They have purchased a new Gia press to supply their manufacturing facilities, and are using EPICS to help operate their extrusion facility.

### **EPICS V8.14 DUE OUT NEXT WEEK**

The latest EPICS update, Version 8.14, will be available early next week on the [Foy Inc web site](#). Each EPICS System Administrator will receive email containing a link to the update, along with information on how to download and install it.

As always, the update is available for all EPICS customers who have up-to-date Software Service Policies.

### **DIE OVEN MODULE ADDED TO EPICS**



The #6 Wishlist item for 2009 was a request for the ability to keep track of Die Oven contents, and to schedule dies through the ovens. Foy responded with the Die Oven Module, which was introduced at the 2010 User Conference. This module will be a no-charge module for Basic and Enterprise edition customers, but will be an extra charge feature for Lite users.

The Die Oven Module allows you to create a loading schedule for your die ovens, and provides a screen to post dies loaded into the ovens. It then keeps track of all dies in the ovens, noting which dies are heating, which ones are ready, and which ones have been soaking for too long. Dies are automatically removed from the oven when press production is posted. Detailed history is recorded for each time a die is in the oven.

The EPICS Help file describes this major new feature in detail. You may also want to download the Die Oven PowerPoint presentation from the [conference slides section](#) of the Foy website.

### **"MUST FILL" FIELDS ADDED ON PRODUCTION POSTING SCREENS**

Do you have certain data, such as Webster readings, which you want to require when production is posted? That capability (which was Wishlist item #14) has been added in the V8.14 EPICS Update.

The Department screen now has a "User Fields" tab. From here, you can specify which User Fields must be filled in when production is posted for that department.

The screenshot shows the 'Departments' application window with the 'User Fields' tab selected. The 'Department' section contains the following information:

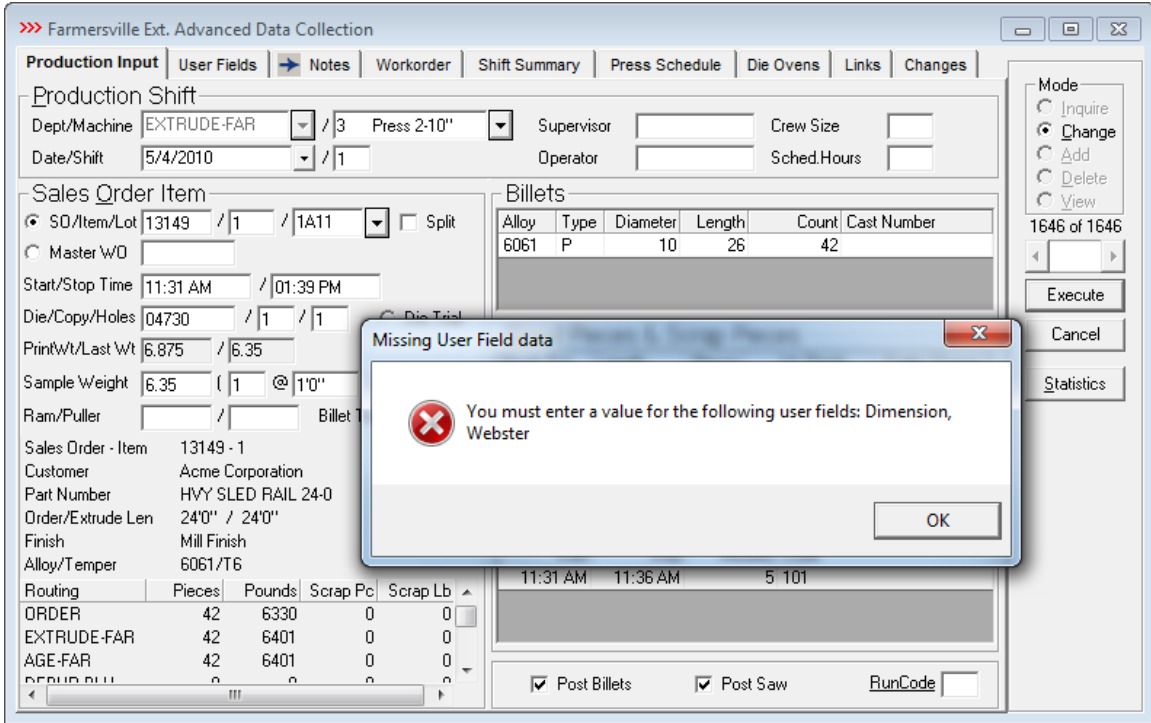
- DeptNum: EXTRUDE-FAR
- Plant: FAR
- DeptLongName: Farmersville Ext.
- Category: EXTRUDE

The 'User Field Configuration' table is as follows:

Field Name	Field Label	Required	Tooltip
UserDate4		<input type="checkbox"/>	
UserDate5		<input type="checkbox"/>	
UserDecimal1	Dimension	<input checked="" type="checkbox"/>	Enter Primary Dimension
UserDecimal2	Webster	<input checked="" type="checkbox"/>	Webster Reading
UserDecimal3		<input type="checkbox"/>	
UserDecimal4		<input type="checkbox"/>	
UserDecimal5		<input type="checkbox"/>	
UserFlag1		<input type="checkbox"/>	
UserFlag2		<input type="checkbox"/>	
UserFlag3	Gap good	<input type="checkbox"/>	
UserFlag4		<input type="checkbox"/>	
UserFlag5		<input type="checkbox"/>	
UserNote1	Production Details	<input type="checkbox"/>	
UserNote2		<input type="checkbox"/>	
UserNote3		<input type="checkbox"/>	
UserNote4		<input type="checkbox"/>	

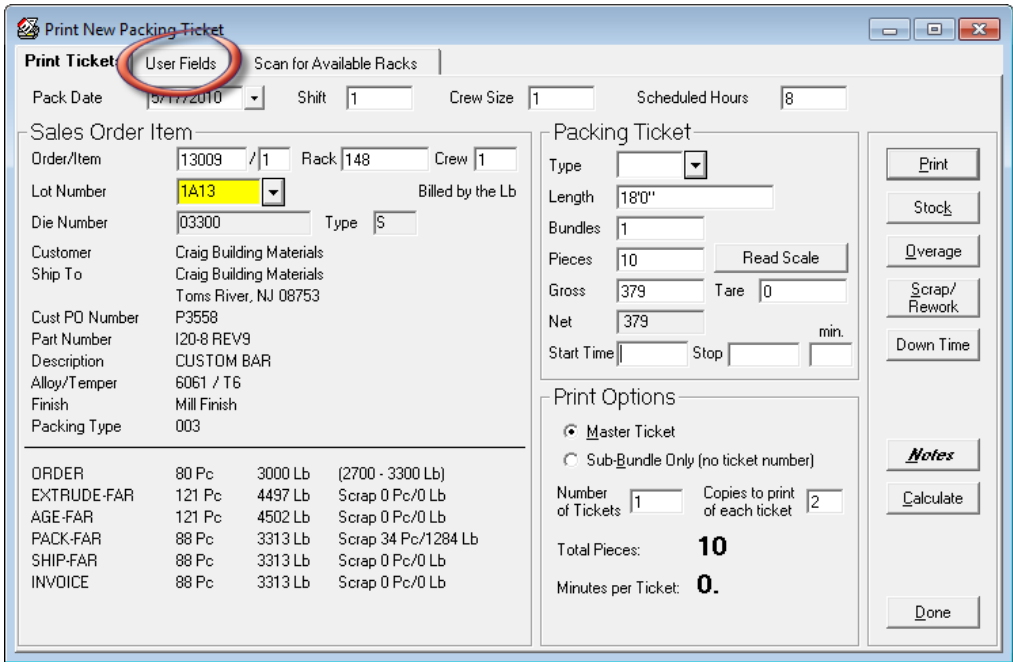
On the right side of the window, there is a 'Mode' section with radio buttons for Inquire, Change, Add, Delete, and View (selected). Below this are navigation arrows, a 'Show All' button, a 'Done' button, a 'Department Groups...' button, a 'Changes' button, and a 'Load All User Fields' button. The window title is 'Departments' and it shows '1 of 2' records.

If a value is not entered for the specified field when production is posted, an error message is displayed.

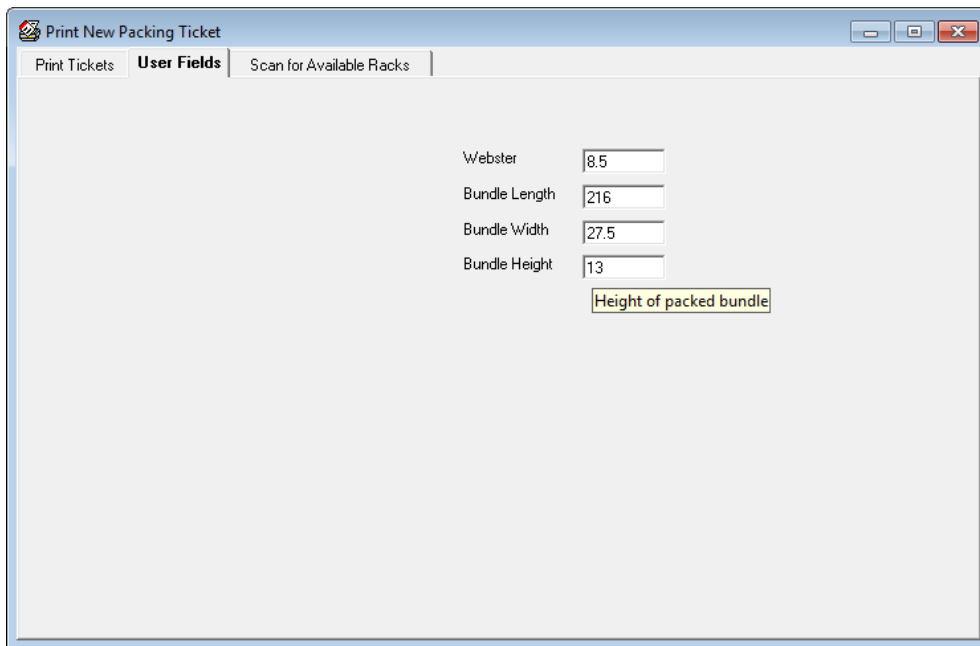


**USER FIELDS ADDED TO TICKET TABLE**

In a related to the one described above, User Fields have been added to the Ticket table and are displayed on the Print New Packing Ticket screen.



This addition will allow you to create "Must Fill" fields, as previously described. This was #13 on the 2009 Wishlist.



Print New Packing Ticket

Print Tickets | **User Fields** | Scan for Available Racks

Webster 8.5

Bundle Length 216

Bundle Width 27.5

Bundle Height 13

Height of packed bundle

### **EPICS V8.14 CONTAINS MANY MORE ENHANCEMENTS**

In addition to the new features described above, the latest EPICS update comes with more enhancements, many from the 2009 Wishlist.

- #4: Moving items from one press to another on the Schedule screen is now much easier.
- #7: A Department Number field has been added to all Note tables, so notes can now be department specific. This makes it possible to group notes by department on the workorder.
- #16: Hours and Square Feet are now shown on the Backlog screen.
- #20: A new notes category has been added for rack tags, packing tickets, and outside processor manifests.
- You can now create a list of possible Ship-To customers for each Bill-To customer.
- Sales orders cannot be deleted if there are active tickets still on file.

- New configuration settings allow default PackCode, ShipViaCode, and ShipTermsCode to be pulled from either the BillTo or ShipTo customer.
- A “Press” selection option has been added to the Die History screen:

The screenshot shows the 'History' tab for Die 00010. The 'Press' dropdown menu is highlighted with a red circle. Below the form is a table titled 'History for Die 00010' with columns for May 2010, Fiscal YTD, and Lifetime.

	May 2010	Fiscal YTD	Lifetime
Press Hours		0.3	13.5
Billet Lb		1504	32748
Saw Lb		1201	24650
Invoice Lb		2407	25133
Saw Lb/Hour	0	4003	1826
Recovery %	0	79.9	75.3

- CSV and XLS files have been added to the types of files that can be emailed from EPICS.
- When posting production for Cutback, the user will receive a warning if Cutback is not in the item's routing.
- You can now make changes to the Date Packed, Shift, and Crew Number on packed tickets. These changes will be posted to the SOItemChangeLog.
- Percent Coring (or Percent Butt) has been added to the DieCopy screen, and is used in workorder calculations. A new MaxButt field in the DieCopy and Machine tables limit the butt length that can be calculated when using Percent Coring.

**EPICS CUSTOMER LIST**

**On any given day  
EPICS is helping over 12,000 people  
at over 80 extrusion plants around the world.**

Aacoa Extrusions – Niles, Michigan  
 Aerolite Extrusion – Youngstown, Ohio  
 Alenco – Bryan, Texas  
 Almag Aluminum Inc. – Brampton, Ontario  
 Altec (Alumnitec). – Jeffersonville, Indiana  
 Aluminio de Baja California (ABC) – Tijuana, Mexico  
 Aluminio de Centro America (ALDECA) – San Salvador, El Salvador  
 Aluminio Del Caribe– San Juan, Puerto Rico  
 Aluminum Extrusions Inc – Senatobia, Miss.  
 American Aluminum Extrusions of Ohio – Canton, Ohio  
 American Aluminum Extrusions of Wisconsin – Beloit, WI  
 APEL Extrusions Ltd. – Calgary, Alberta  
 Arch Aluminum – Miami, Florida  
 Architectural & Metal Systems – Cork, Ireland  
 Astro Shapes – Struthers, Ohio  
 Benada Aluminum – Medley, Florida  
 Bristol Aluminum – Levittown, Pennsylvania  
 Briteline Extrusions – Summerville, S. Carolina  
 BRT Extrusions – Niles, Ohio  
 CanArt – Brampton, Ontario  
 CanArt – Tecumseh, Ontario  
 Central Aluminum – Columbus, Ohio  
 Crane Aluminium Extrusions – Angaston, Australia  
 Crane Aluminium Extrusions (Capral) – Penrith, Australia  
 Crown Extrusions, Chaska, Minnesota  
 Crystal Extrusion Systems – Union, Missouri  
 Empire Resources – Baltimore, Maryland  
 Extrudex – Weston, Ontario  
 Extrudex – Bernières, Quebec  
 Extrudex – North Jackson, Ohio  
 FISA – Guayaquil, Ecuador  
 G. James – Brisbane, Australia  
 Frontier Aluminium – Corona, California  
 Hualum. – Pietermaritzburg, South Africa  
 Hualum. – Capetown, South Africa  
 Hualum. – Olifantsfontein, South Africa  
 Independent Extrusions (INEX) – Hamilton, New Zealand  
 Independent Extrusions (INEX) – Melbourne, Australia  
 International Extrusion – Waxahachie, Texas  
 International Extrusions – Garden City, Michigan  
 Jalex – Kingston, Jamaica  
 Keymark Corporation – Fonda, New York  
 Keymark Corporation – Lakeland, Florida  
 MI Metals, Inc - Smyrna, Tennessee  
 MI Metals, Inc – Millersburg, Pennsylvania  
 MI Metals, Inc – Oldsmar, Florida  
 MI Metals, Inc – Prescott Valley, Arizona  
 Mid-America Extrusions – Indianapolis, Indiana  
 Midwest Aluminum – Withee, Wisconsin  
 Non-Ferrous Extrusion – Houston, Texas  
 Oldcastle (Vista Wall Arch. Products) – Midway, Tennessee  
 Oldcastle (Vista Wall Arch. Products) – Terrell, Texas  
 Patrick Metals – Mishawaka, Indiana  
 Pennex – Wellsville, Pennsylvania  
 Perfiles de Aluminio.– San Juan, Puerto Rico  
 Postal Aluminum – Cassopolis, Michigan  
 Postal Aluminum – Portland, Oregon  
 Pries Enterprises – Independence, Iowa  
 PT Alumindo Perkasa – Jakarta, Indonesia  
 PT Indal – Surabaya, Indonesia  
 Profab Industries – Canfield, Ohio  
 Profile Extrusions – Rome, Georgia  
 Profile (RJS Precision Ext.) – Phoenix, Arizona  
 Selaco Aluminium – Johar, Malaysia  
 Service Center Metals – Prince George, Virginia  
 Sierra Aluminum – Fontana, California  
 Silver City Aluminum -- Taunton, Mass  
 Sierra Aluminum – Riverside, California  
 Specialty Extrusion – Fullerton, California  
 Spectra Aluminum – Woodbridge, Ontario  
 Star Extruded Shapes, Canfield, Ohio  
 Superior Extrusion – Gwinn, Michigan  
 Sun Valley Extrusions – Los Angeles, California  
 Tecnoglass – Barranquilla, Columbia  
 Taber Extrusions – Gulfport, Mississippi  
 Taber Extrusions – Russellville, Arkansas  
 Tifton Extrusions – Tifton, Georgia  
 Tri-City Extrusion – Bristol, Tennessee  
 Tubelite – Reed City, Michigan  
 Vitex – Franklin, New Hampshire  
 Wakefield Engineering – Pelham, New Hampshire  
 Western Extrusion – Carrolton, Texas  
 Zarbana Industries – Columbiana, Ohio

**Foy Inc**  
**111 Farmersville Parkway, Suite 100**  
**Farmersville, TX 75442**

**Phone: 972-782-7282**  
**Fax: 972-782-7130**

**Website: <http://www.foync.com>**

Jim Foy [jim@foync.com](mailto:jim@foync.com)  
 John Stenger [john@foync.com](mailto:john@foync.com)  
 Scott Wilson [scott@foync.com](mailto:scott@foync.com)  
 Stacy Coleman- [stacy@foync.com](mailto:stacy@foync.com)  
 Foley

General mail [info@foync.com](mailto:info@foync.com)  
 Help [help@foync.com](mailto:help@foync.com)

To stop receiving EPICS-related email, send a blank email to [unsubscribe@foync.com](mailto:unsubscribe@foync.com)