

Foy's EPICS Events

Extrusion Production Information and Control Systems

May 2008 * Volume 12, Issue 2

IN THIS ISSUE

IN THIS ISSUE	1
SAN FRANCISCO CONFERENCE A GREAT SUCCESS.....	2
DOWNSTREAM SCHEDULING FEATURED IN LATEST EPICS UPDATE	3
PUBLICIZING THE RECYCLABILITY OF ALUMINUM.....	3
IMPROVED USER MAINTENANCE ADDED FOR EPICS ADMINISTRATORS .	4
CUSTOMER ACTIVITY LOG ADDED.....	4
MORE INFORMATION ADDED TO SOITEM SCREEN.....	5
OTHER IMPROVEMENTS INCLUDED IN THE EPICS V8.9 UPDATE	5
FOY FORUM BEING UPDATED.....	6
FOY EXHIBITS AT ET-08	7
EPICS CUSTOMER LIST.....	8

SAN FRANCISCO CONFERENCE A GREAT SUCCESS

The 10th Annual EPICS User Conference was held in San Francisco last month, and was rated a great success by the 60 attendees. The only complaint we heard was about the cool weather, so we promise to schedule next year's conference in warmer climes. Florida and New Orleans are the two top possibilities.

Conference highlights included a presentation by Craig Werner, as well as a review of all the enhancements added to EPICS during the last year. Slides from the conference sessions are available on the [Foy website](#).





A more extensive selection of conference photos can also be found on the [Foy website](#).

DOWNSTREAM SCHEDULING FEATURED IN LATEST EPICS UPDATE

One of the top five Wishlist items from the 2007 conference was the ability to generate schedules for departments downstream from the press. The EPICS V8.9 update includes this feature. The downstream scheduling screen looks and operates similar to the press scheduling screen.

This feature will be most useful to extruders wanting to prioritize jobs that are immediately available for production in a particular department. However, it can also be used to schedule any already extruded item.

PUBLICIZING THE RECYCLABILITY OF ALUMINUM

Worldwide Extrusions Packing Ticket		
 10983		
Part COVE MOULD		
Die 11052		
SO-Item 10758 - 2		
PO SF3422		
<u>Alloy</u>	<u>Temper</u>	<u>Finish</u>
6061	T5	Anodize Bronze
<u>Ship To</u>		
Ajax Pet Products 12999 ST. CHARLES ROCK RD San Francisco, CA 90210		
<u>Crew No.</u>	<u>Date Packed</u>	
1	02/15/2008	
<u>Pieces</u>	<u>Net Wt</u>	<u>Length</u>
10	270	24'0"
 Made with 90% Recycled Aluminum		

At the ET-08 seminar last week, we had the chance to talk to numerous extruders about the new PerCent Recycled feature that we described in the last newsletter. Many of them thought it was a feature that the entire industry should adopt, as more and more extrusion customers get into LEEDS projects.

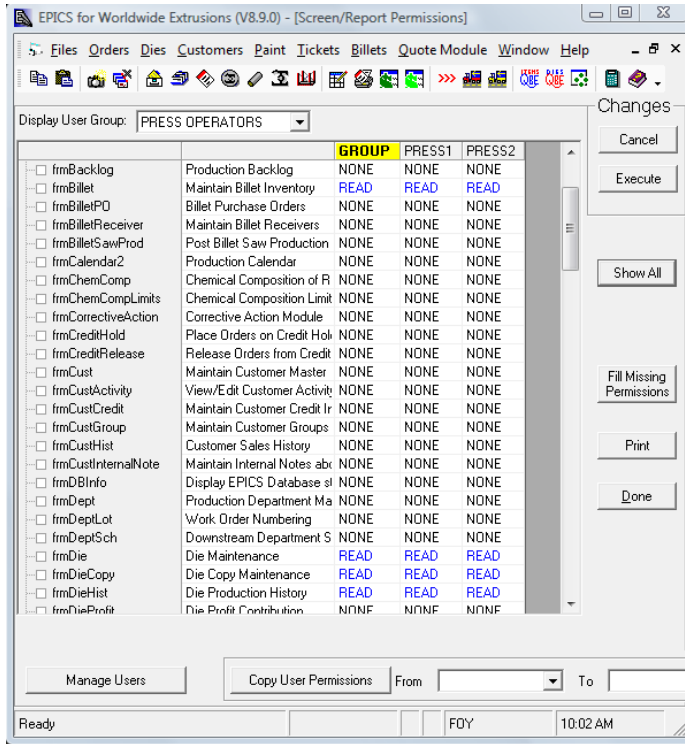
Utilizing this feature requires that your billet supplier provide you with the recycled content of the secondary logs or billet they send you. Ideally, they will include this data in the file they email you as part of the ChemComp program (which specifies a CSV file containing chemical composition for each cast number in a shipment.)

If this information is not available, you can instead enter the average PerCent Recycled for each of your billet inventory

records. This is a field added in EPICS V8.8 on the "Maintain Billets" screen.

In either case, EPICS can locate the appropriate number and print it on the packing ticket.

IMPROVED USER MAINTENANCE ADDED FOR EPICS ADMINISTRATORS



It is now much easier for EPICS Administrators to maintain User Permissions, although it takes some setup effort at the start.

Beginning with the EPICS 8.9 update, you can create User Groups, such as ADMIN, CSR, PRESS, PACK, etc. Users can be placed in the appropriate Group, and permissions can be assigned for all members of the Group.

This feature will be especially valuable when adding new users, and when creating permissions for new screens and reports.

their initials have been added to the User table. This table can now be edited from a new Maintain User screen.

User email addresses as well as

CUSTOMER ACTIVITY LOG ADDED

EPICS has long included an “Internal Notes” feature for Customers – a place to record miscellaneous notes for the customer. But now EPICS has a much-enhanced logging feature that includes logging a contact, categorizing it, assigning it, discussing it, tracking it, and closing it. It’s not quite a CRM package, but it has many of the features of a good CRM program.

The Customer Activity Log appears as a tab on the Maintain Customer screen. There is also a new screen, “Search for Customer Activity,” that you will need to add to your menu (if you plan to use this feature.)

System Administrators will need to set permissions for **frmCustActivity** and **frmActivitySearch**

MORE INFORMATION ADDED TO SOITEM SCREEN

A new tab, **Pack/Ship/Invoice**, has been added to the SOItem screen. From here, you can quickly see all of the tickets packed for this item, all of the manifests shipped, and all of the invoices prepared.

Tickets Packed for Sales Order Item 11622 - 2

Ticket	Status	Lot	Length	Finish	Pieces	Gross Lb	Net Lb	Dt Packed	Manifest	Dt Shipped
Shipped to Customer										
1660	S	1A11	98.4"	000	401	3656	3589			
1661	S	1A11	98.4"	000	128	1155	1137	8/3/2007	20667	8/3/2007
1744	S	1A12	98.4"	000	127	1146	1128	8/3/2007	20667	8/3/2007
1911	S	1A13	98.4"	000	116	1073	1057	8/4/2007	20686	8/7/2007
					30	282	267	8/8/2007	20729	8/9/2007

Shipping Manifests for Sales Order 11622

Manifest	Date	Status	Bill of Lading	Via	Item	# of Tickets	Pieces	Gross Lb	Net Lb
20667	8/3/2007	C		OT	*	4	505	4575	4509
20686	8/7/2007	C		OT	*	1	116	1073	1057
20729	8/9/2007	C		OT	*	1	30	282	267

Invoices for Sales Order 11622

Invoice	Date	Status	Manifest	Credit	Item	Pieces	Pounds
721253	8/3/2007	B	20667	N	*	505	4509
721274	8/7/2007	B	20686	N	*	116	1057
721319	8/9/2007	B	20729	N	*	30	267

Right-clicking on the ticket, manifest, or invoice numbers will take you straight to the appropriate record.

OTHER IMPROVEMENTS INCLUDED IN THE EPICS V8.9 UPDATE

- **Schedule information** (Date, Shift, and Machine) added to the Department tab of the QBE Items and Customer Service Inquiry screens.
- Added the option of only printing **acknowledgements and manifest** that were entered by a specific user
- The Maintain **Manifest** screen now shows the tickets and invoices associated with the manifest.
- The **Press Schedule** screen now has a "Group by Date/Shift" option

- A new configuration setting will turn off the “Not enough time” warning on the **scheduling** screens.
- The **Maintain Stock Inventory** screen now shows the Date Packed.
- At **Order Entry**, the “Dept Spec” data from the Part is now copied to the Sales Order.
- In the optional **Quotation Module**-
 - Email addresses have been added to the customer screen noting where to email quotes
 - The Quotation Header now displays Revision, Contact Name, and Date Closed.
 - Standard Notes can now be used in the Quotation Module
- Right-clicking on a **Manifest** number will now take you to the Maintain Manifest screen.
- Right-clicking on an **Invoice** number will take you to the Invoicing screen.
- Clicking on an email address will open your **mail** program
- The **Salesman** screen now has a field for Email address.
- Changes or **deletions of Notes** are now recorded in the appropriate Change Log.
- **Change log entries** now wrap inside their field for easier reading
- Configuration settings have been added for the default number of **ticket** copies to print and maximum number of identical tickets to print.

FOY FORUM BEING UPDATED

The Foy Forum is in the process of being revitalized and improved, and will soon be available for input from any EPICS user. We plan for the Foy Forum to be the ideal tool for tapping into the accumulated knowledge of thousands of other EPICS users.

The Foy Forum is located on the Foy website. When the updated forum is opened, it will contain key topics of interest. One discussion area will allow you to post your ideas on future enhancements. Another will feature regular postings from Foy personnel regarding features under development, and will offer you the

opportunity to critique those features. Yet another area will act as a community bulletin board, where you can post questions about handling unique situations with EPICS.

We will send an email to all EPICS users when the Forum re-opens.

FOY EXHIBITS AT ET-08



ET-08, the extrusion technology seminar and expo held every four years, wrapped up another successful session last week. Held at the Gaylord hotel in the Orlando area, it attracted over 1200 extruders from around the world.

Foy has been an active participant in all of the ET sessions over the last 30 years. This year, Foy demonstrated EPICS in a booth at the ET-Expo, which featured over 100 exhibitors. Foy also made a presentation at the Expo Theater.

EPICS CUSTOMER LIST

**On any given day
EPICS is helping over 13,000 people
at over 85 extrusion plants around the world.**

Aacoa Extrusions – Niles, Michigan
 Aerolite Extrusion – Youngstown, Ohio
 Alenco – Bryan, Texas
 Almag Aluminum Inc. – Brampton, Ontario
 Altec (Alumnitec). – Jeffersonville, Indiana
 Aluminio de Baja California (ABC) – Tijuana, Mexico
 Aluminio de Centro America (ALDECA) – San Salvador, El Salvador
 Aluminio Del Caribe– San Juan, Puerto Rico
 Aluminum Extrusions Inc – Senatobia, Miss.
 American Aluminum Extrusions of Ohio – Canton, Ohio
 American Aluminum Extrusions of Wisconsin – Beloit, WI
 APEL Extrusions Ltd. – Calgary, Alberta
 Arch Aluminum – Miami, Florida
 Astro Shapes – Struthers, Ohio
 Atlantic Aluminum (Signature) – Lumber Bridge, N.C.
 Benada Aluminum – Medley, Florida
 Bristol Aluminum – Levittown, Pennsylvania
 Briteline Extrusions – Summerville, S. Carolina
 BRT Extrusions – Niles, Ohio
 CanArt – Brampton, Ontario
 CanArt – Tecumseh, Ontario
 Central Aluminum – Columbus, Ohio
 Crane Aluminium Extrusions – Angaston, Australia
 Crane Aluminium Extrusions (Capral) – Penrith, Australia
 Crown Extrusions, Chaska, Minnesota
 Crystal Extrusion Systems – Union, Missouri
 Empire Resources – Baltimore, Maryland
 Extrudex – Weston, Ontario
 Extrudex – Bernières, Quebec
 Extrudex – North Jackson, Ohio
 FISA – Guayaquil, Ecuador
 Frontier Aluminum – Corona, California
 Golden Aluminum Extrusion – Plant City, Florida
 Golden Aluminum Extrusion – Warren, Ohio
 Hualum. – Pietermaritzburg, South Africa
 Hualum. – Capetown, South Africa
 Hulalum. – Olifantsfontein, South Africa
 Independent Extrusions (INEX) – Hamilton, New Zealand
 Independent Extrusions (INEX) – Melbourne, Australia
 International Extrusion – Alhambra, California
 International Extrusion – Waxahachie, Texas
 International Extrusions – Garden City, Michigan
 Jalex – Kingston, Jamaica
 Keymark Corporation – Fonda, New York
 Keymark Corporation – Lakeland, Florida
 MI Metals, Inc - Smyrna, Tennessee
 MI Metals, Inc – Millersburg, Pennsylvania
 MI Metals, Inc – Oldsmar, Florida
 MI Metals, Inc – Millen, Georgia
 MI Metals, Inc – Prescott Valley, Arizona
 Mid-America Extrusions – Indianapolis, Indiana
 Midwest Aluminum – Withee, Wisconsin
 Non-Ferrous Extrusion – Houston, Texas
 Patrick Metals – Mishawaka, Indiana
 Pennex – Wellsville, Pennsylvania
 Perfiles de Aluminio.– San Juan, Puerto Rico
 Postal Aluminum – Cassopolis, Michigan
 Pries Enterprises – Independence, Iowa
 PT Alumindo Perkasa – Jakarta, Indonesia
 PT Indal – Surabaya, Indonesia
 Profab Industries – Canfield, Ohio
 Profile Extrusions – Rome, Georgia
 Profile (RJS Precision Ext.) – Phoenix, Arizona
 Selaco Aluminium – Johar, Malaysia
 Service Center Metals – Prince George, Virginia
 Sierra Aluminum – Fontana, California
 Silver City Aluminum -- Taunton, Mass
 Sierra Aluminum – Riverside, California
 Specialty Extrusion – Fullerton, California
 Spectra Aluminum – Woodbridge, Ontario
 Star Extruded Shapes, Canfield, Ohio
 Superior Extrusion – Gwinn, Michigan
 Sun Valley Extrusions – Los Angeles, California
 Tecnoglass – Barranquilla, Columbia
 Taber Extrusions – Gulfport, Mississippi
 Taber Extrusions – Russellville, Arkansas
 TAI-AO Aluminium – Taishan, Guang Dong, China
 Temroc Metals (Signature) – Hamel, Minnesota
 Tri-City Extrusion – Bristol, Tennessee
 Tubelite – Reed City, Michigan
 Vista Wall Arch. Products – Midway, Tennessee
 Vista Wall Arch. Products – Terrell, Texas
 Vitex – Franklin, New Hampshire
 Wakefield Engineering – Pelham, New Hampshire
 Western Extrusion – Carrollton, Texas
 Zarbana Industries – Columbiana, Ohio

Foy Inc
111 Farmersville Parkway
Farmersville, TX 75442

Phone: 972-782-7282
Fax: 972-782-7130

Website: <http://www.foyinc.com>

Jim Foy jim@foyinc.com
 John Stenger john@foyinc.com
 Scott Wilson scott@foyinc.com
 Chris Delzell chris@foyinc.com
 Stacy Coleman- stacy@foyinc.com
 Foley
 General mail info@foyinc.com
 Help help@foyinc.com

To stop receiving EPICS-related email, send a blank email to unsubscribe@foyinc.com