



# *FOY'S EPICS EVENTS*

## **In this issue:**

<b>BARCODE SCANNING FOR PHYSICAL INVENTORY IN V9 .....</b>	<b>2</b>
<b>START TESTING V9 ASAP! .....</b>	<b>4</b>
<b>MAKE HOTEL RESERVATIONS FOR EUC 2015 .....</b>	<b>5</b>
<b>FOY INC HOLIDAY SCHEDULE.....</b>	<b>5</b>
<b>EPICS TRAINING OPPORTUNITIES.....</b>	<b>5</b>
<b>EPICS CUSTOMER LIST .....</b>	<b>6</b>

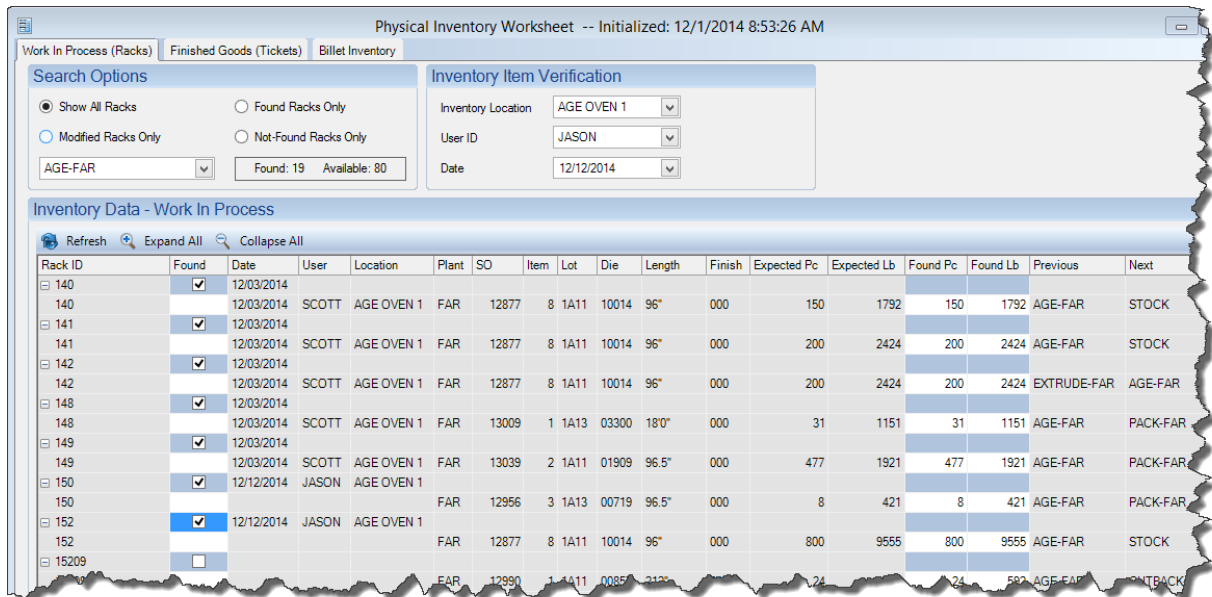
*Season's Greetings  
&  
Happy New Year*



## Barcode Scanning for Physical Inventory in V9

Our last [newsletter](#) featured the 15 wish-list items that were included in the first major update of EPICS V9. Since then, V9 has also been updated to allow barcode scanning when using the Physical Inventory Worksheet. This can be done directly from the Physical Inventory Worksheet screen, or by using the EPICS Mobile Interface.

In the example below, we are doing physical inventory on our Work in Process directly from the screen with either a USB or Bluetooth keyboard wedge scanner. We are verifying the location and contents of the racks at the Age Department.



As each rack is located in the selected inventory location, the rack tag already attached to the rack can be scanned to automatically update the inventory worksheet. As in the example above, the racktag for rack 152 was scanned, and the worksheet was automatically updated with the Date, User, Location, and the SO Item information contained within the rack. The found pieces can then be adjusted if needed using the Physical Inventory Worksheet.

Working directly from the screen would be a great way to implement the use of tablets running full versions of Windows (and EPICS). A USB keyboard wedge scanner can easily be connected to most Windows Tablets which would enable running the full application on the tablet and scanning while directly interacting with the Physical Inventory Worksheet screen. This could also be accomplished by using tablets that support RDP and have USB ports.

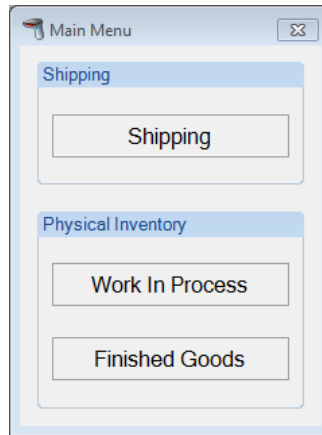
As previously mentioned, another way to implement the scanning capability for Physical Inventory would be to use a smart scanner via the EPICS Mobile

Interface. EPICS Mobile Interface is designed to work with Smart Scanners and Mobile Devices in conjunction with both the Enhanced Shipping Module and Physical Inventory. It will require some setup for each wireless scanner.

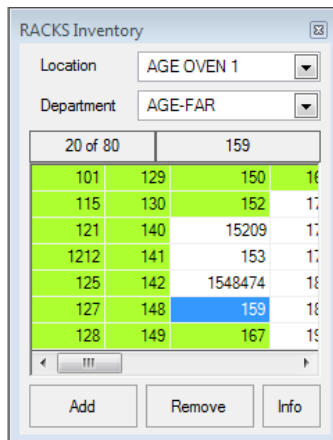
The Scanner will need to be configured to connect to your wireless network and you must have a terminal server or Citrix server to connect to. EPICS must be installed on the server as it would be on any workstation.

There is much more information about the setup involved in the EPICS Help documentation under 'EPICS Mobile Interface'.

Once your smart scanner and barcoding is setup, you'll see a simple menu on your smart scanner like below:



Once you have selected 'Work In Process' from the menu, your smart scanner will display an interface showing the available racks for the department and location you have selected, as seen below:



Racks that are found and subsequently scanned are highlighted in green.

This added capability is a result of our commitment to provide you with the most robust extrusion software available. Look for more enhancements and new features coming soon!

## Start Testing V9 ASAP!

Even if you're not ready to update to V9, we highly encourage you to go ahead and set it up on a test database so that you can begin testing the newest version of EPICS. The more you can become familiar with EPICS V9, the more prepared you'll be when it is time to make the switch. Plus, you'll get to see all the great improvements and new features that we've been talking about.



To get you up and running for testing the software, there are a few more things than usual to consider, and we are ready to help you at every step of the process.

To begin, please read the document, [Checklist for Preparing to Update to EPICS V9](#). It outlines the things that we will need to consider in completing the update process. It will also help you estimate time that will be required and the type of assistance you will need.

Next, complete this online [Support Survey](#). It is a short survey with some important questions such as estimated dates for testing and go-live, and what type of assistance (on-site, online, none) you anticipate needing.

Regardless of your timeline for going live with V9, the sooner you start testing the better. We look forward to helping you get your test database for V9 up and running. Once you have reviewed the [checklist](#) and completed the [survey](#), we will provide you with very detailed, step by step instructions for setting this up. Our support team is ready to assist.

We would especially love to hear your feedback at next year's EPICS User Conference, so start testing EPICS V9 ASAP!



## Make Hotel Reservations for EUC 2015

The conference will be held April 12<sup>th</sup> – 15<sup>th</sup>.

We are excited to be staying in the [Union Station Hotel](#) in Nashville, TN.

It is a gorgeously renovated train station, and boasts the finest accommodations.



It's not too early to reserve your room(s)! Rooms are available from 4/11/14 to 4/16/14 at the discounted rate of \$209 per night. To make your reservations, call 1-615-620-5676 and mention the 'Foy EPICS User Conference'.

Look for more conference and registration information coming at the beginning of the new year. Feel free to go ahead and make hotel reservations and travel arrangements now.

This is going to be an exciting conference in an outstanding location!

## Foy Inc Holiday Schedule

Our office will be **closed from December 24<sup>th</sup> until January 4<sup>th</sup>**. If you have any urgent matters, please send us an email at [help@foyinc.com](mailto:help@foyinc.com) and we will monitor our helpdesk throughout the holidays.

**All of us at Foy Inc wish you Warm Season's Greetings and Happy Holidays!**

## EPICS Training Opportunities

EPICS classroom training sessions are held at the Foy Inc offices in Farmersville, Texas. The next available V9 classes are scheduled for January 19-22 and February 16-19 of 2015. You can always view training class availability on our [Training Classes](#) webpage.

Two day report writing classes are also available upon [request](#). We highly recommend this class to maximize your use of Crystal Reports with the EPICS database.

## EPICS Customer List

*On any given day  
EPICS is helping over 15,000 people  
at over 100 extrusion plants around the world.*

Aacoa Extrusions – Niles, Michigan  
 Aerolite Extrusion – Youngstown, Ohio  
 Alenco – Bryan, Texas  
 Almag Aluminum Inc. – Brampton, Ontario  
 Almax Aluminium – Brisbane, Australia  
 Altec – Jeffersonville, Indiana  
 Aluminio de Baja California (ABC) – Tijuana, Mexico  
 Aluminio de Centro América – San Salvador, El Salvador  
 Aluminio Del Caribe– San Juan, Puerto Rico  
 Aluminum Extrusions Inc – Senatobia, Miss.  
 American Aluminum Extrusions – Canton, Ohio  
 American Aluminum Extrusions – Beloit, WS  
 American Aluminum Extrusions – Roscoe, Illinois  
 Anaheim Extrusions (UMEX) – Anaheim, California  
 APEL Extrusions Ltd. – Calgary, Alberta  
 APEL Extrusions – Portland, Oregon  
 Apex Aluminum Extrusions – Langley, BC, Canada  
 Architectural & Metal Systems – Cork, Ireland  
 Ascend Custom Extrusions – Wylie, Texas  
 Astro Shapes – Struthers, Ohio  
 Benada Aluminum – Medley, Florida  
 Bristol Aluminum – Levittown, Pennsylvania  
 Briteline Extrusions – Summerville, S. Carolina  
 BRT Extrusions – Niles, Ohio  
 CanArt – Brampton, Ontario  
 Capral Extrusions – Angaston, Australia  
 Capral Extrusions – Penrith, Australia  
 CanArt – Tecumseh, Ontario  
 Central Aluminum – Columbus, Ohio  
 Claridge Products – Harrison, Arkansas  
 Crown Extrusions, Chaska, Minnesota  
 Crystal Extrusion Systems – Union, Missouri  
 Dee Zee, Inc. – Des Moines, Iowa  
 Extruders Inc. – Wylie, Texas  
 Extrudex – Weston, Ontario  
 Extrudex – Bernières, Quebec  
 Extrudex – North Jackson, Ohio  
 FISA – Guayaquil, Ecuador  
 Frontier Aluminum – Corona, California  
 G. James – Brisbane, Australia  
 G. James – Sydney, Australia  
 Hulamin – Pietermaritzburg, South Africa  
 Hulamin – Capetown, South Africa  
 Hulamin – Olifantsfontein, South Africa  
 Independent Extrusions (INEX) – Hamilton, New Zealand  
 Independent Extrusions (INEX) – Brisbane, Australia  
 Independent Extrusions (INEX) – Melbourne, Australia  
 International Extrusions – Garden City, Michigan  
 International Extrusion Corp. (UMEX) – Waxahachie, Texas  
 Jalex – Kingston, Jamaica  
 Keymark Corporation – Fonda, New York  
 Keymark Corporation – Lakeland, Florida  
 Keymark Corporation – Orlando, Florida  
 MI Metals, Inc - Smyrna, Tennessee  
 MI Metals, Inc – Millersburg, Pennsylvania  
 MI Metals, Inc – Oldsmar, Florida  
 MI Metals, Inc – Prescott Valley, Arizona  
 MI Windows and Doors – Carrollton, Texas  
 Michigan Extruded Aluminum – Jackson, Michigan  
 Mid-America Extrusions – Indianapolis, Indiana  
 Midwest Aluminum – Withee, Wisconsin  
 Nanshan America – Lafayette, Indiana  
 Nigalex – Lagos, Nigeria  
 Non-Ferrous Extrusion – Houston, Texas  
 Oldcastle (Vista Wall Arch. Products) – Midway, Tennessee  
 Oldcastle (Vista Wall Arch. Products) – Terrell, Texas  
 Orrvilon (Holtec) – Orrville, Ohio  
 Patrick Metals (UMEX) – Mishawaka, Indiana  
 Pennex – Leetonia, Ohio  
 Pennex – Wellsville, Pennsylvania  
 Perfiles de Aluminio.– San Juan, Puerto Rico  
 Postal Aluminum -- Cassopolis, Michigan  
 Press Metals – Cumming, Georgia  
 Pries Enterprises – Independence, Iowa  
 PT Alumindo Perkasa – Jakarta, Indonesia  
 PT Indal – Surabaya, Indonesia  
 Profile Extrusions – Rome, Georgia  
 Profile (RJS Precision Ext.) – Phoenix, Arizona  
 Schimmer Metal – Bangkok, Thailand  
 Selaco Aluminium – Johar, Malaysia  
 Service Center Metals – Prince George, Virginia  
 Sierra Aluminum – Fontana, California  
 Sierra Aluminum – Riverside, California  
 Silver City Aluminum -- Taunton, Mass  
 Spectra Aluminum – Bradford, Ontario  
 Star Extruded Shapes, Canfield, Ohio  
 Superior Extrusion – Gwinn, Michigan  
 Superior Metal Shapes – Chino, California  
 Sun Valley Extrusions – Los Angeles, California  
 Tecnoglass – Barranquilla, Columbia  
 Taber Extrusions – Gulfport, Mississippi  
 Taber Extrusions – Russellville, Arkansas  
 Tifton Extrusions – Tifton, Georgia  
 Tri-City Extrusion – Bristol, Tennessee  
 Tubelite – Reed City, Michigan  
 Universal Molding (UMEX) – Downey, California  
 Vitex – Franklin, New Hampshire  
 Wakefield Engineering – Pelham, New Hampshire  
 Western Extrusion – Carrollton, Texas  
 Zarbana Industries – Columbiana, Ohio

**Foy Inc**  
**111 Farmersville Pkwy, Suite 100**  
**Farmersville, TX 75442**  
 Phone: 972-782-7282  
 Fax: 972-782-7130

Web: [www.foyinc.com](http://www.foyinc.com)

Jim Foy: [jim@foyinc.com](mailto:jim@foyinc.com)  
 John Stenger: [john@foyinc.com](mailto:john@foyinc.com)  
 Scott Wilson: [scott@foyinc.com](mailto:scott@foyinc.com)  
 Jason Naff: [jason@foyinc.com](mailto:jason@foyinc.com)  
 Stacy Foley: [stacy@foyinc.com](mailto:stacy@foyinc.com)  
 General Information: [info@foyinc.com](mailto:info@foyinc.com)  
 Help: [help@foyinc.com](mailto:help@foyinc.com)